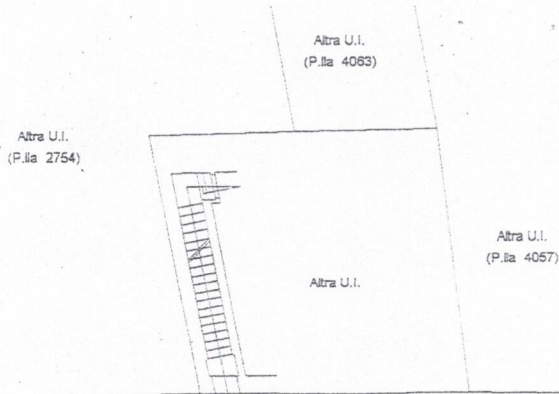


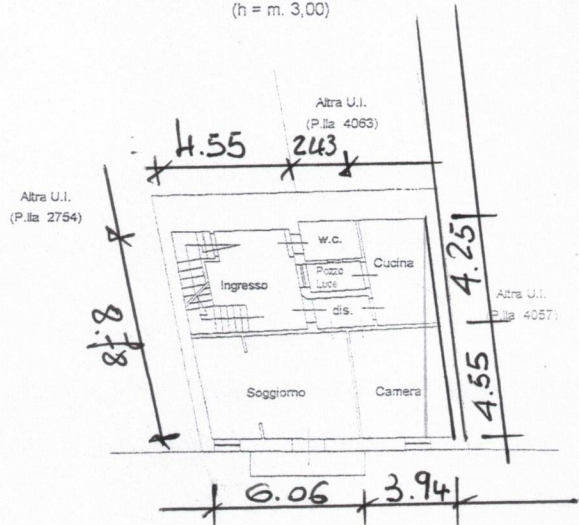
Pianta Piano Terra
(h = m. 5,30)



INGRESSO INDIPENDENTE

VIA TIRO A SEGNO

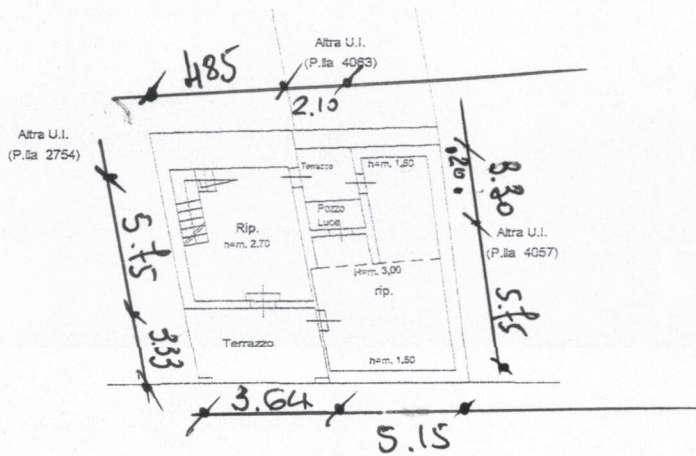
Pianta Piano Primo
(h = m. 3,00)



VIA TIRO A SEGNO

Mq. 95.00

Pianta Piano Secondo



VIA TIRO A SEGNO

Mq. 28.00 h. 2.70

Mq. 50.00 h. 3.00/1.50

Mq. 16 SUP. SCOPERTA

