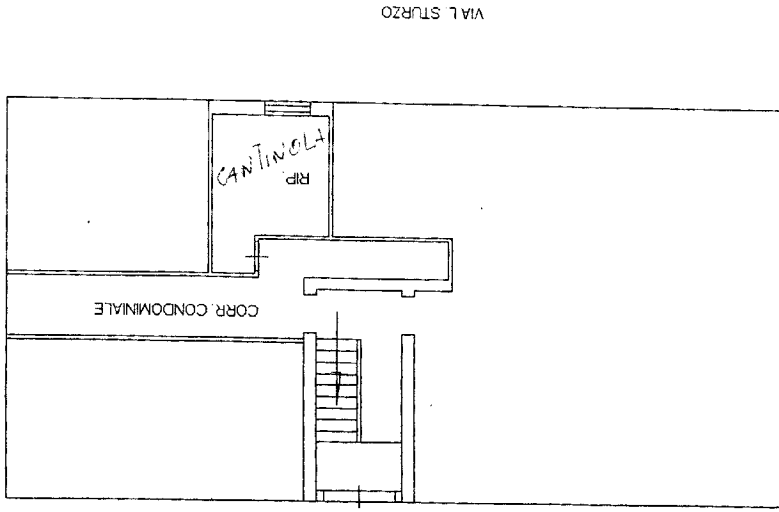


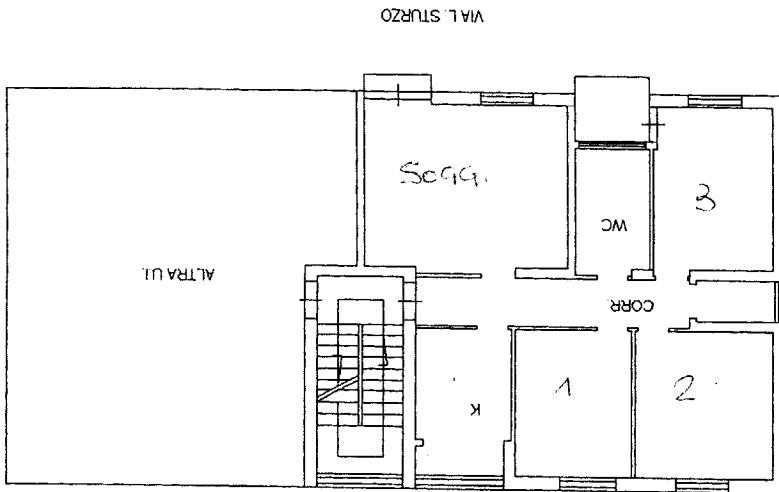


CORTILE CONDOMINIALE



PRIMO PIANO SOTTOSTRADA  
H=2,70 m

CORTILE CONDOMINIALE



PIANO SECONDO (PARTE ALTE E RIALZATO)  
H=3,00 m

VIA RUFFILLI

CORTILE CONDOMINIALE

VIA RUFFILLI

CORTILE CONDOMINIALE